

# Pleasantville Shopping Center

## 700 E Black Horse Pike

### Pleasantville, NJ

Available for Lease:  
**20,850 SF; 7,292 SF; &  
 4,535 SF**



- Join Fun City Trampoline Park (Opening Soon), Taco Bell, Dunkin' Donuts, KFC, and many more.
- Sam's Club, Walmart, Chick-Fil-A, Starbucks, and Planet Fitness are just minutes away from subject center.
- Easy access to and from the Garden State Parkway Exit 37, with a traffic count of 60,289 cars per day.
- Excellent location on busy Black Horse Pike with a traffic count of 28,000 vehicles per day.
- Seeking: Discount Store, Health Club, Boutique Fitness, Pet Store, Specialty Food Store, Grocer, Restaurant, and other retail uses.

All information is from sources believed reliable and has not been independently verified. No representation is made to the accuracy of information herein, which is subject to errors, omissions and modifications. Licensed in NY, NJ, CT & PA.

### DEMOGRAPHICS 2024

MILES	1	3	5
POPULATION	12,786	44,327	100,688
HH INCOME	\$68,091	\$86,066	\$105,402
DAYTIME POP	13,952	45,646	95,165

**TOTAL GLA - 118,024 SF**  
**TRAFFIC COUNT- ROUTE 322 - 28,000 CARS PER DAY**

**Mario Brunelli** / VP of Investment Sales & Site Acquisitions  
 Cell: 786-570-9723  
 mbrunelli@rjbrunelli.com  
 Aug 9,24

**Chelsea Reizner** / Sales Associate  
 Cell: 201-724-4931  
 creizner@rjbrunelli.com

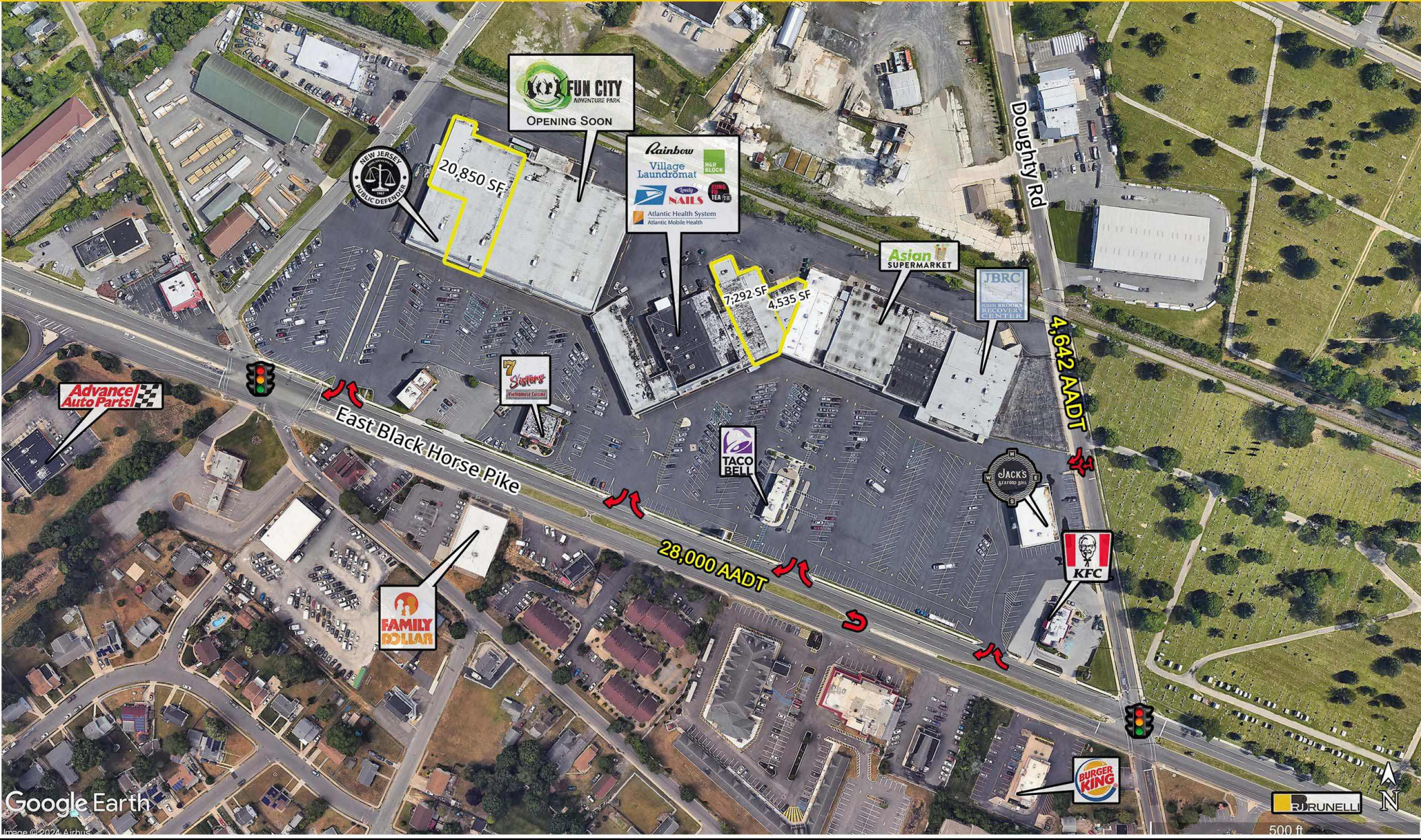


R.J. Brunelli & Co., LLC  
 400 Perrine Rd, Ste 405  
 Old Bridge, NJ 08857

732-721-5800  
 www.rjbrunelli.com

Pleasantville Shopping Center  
700 E Black Horse Pike  
Pleasantville, NJ

Available for Lease:  
20,850 SF; 7,292 SF; &  
4,535 SF



**Mario Brunelli** / VP of Investment Sales & Site Acquisitions  
Cell: 786-570-9723  
mbrunelli@rjbrunelli.com

**Chelsea Reizner** / Sales Associate  
Cell: 201-724-4931  
creizner@rjbrunelli.com

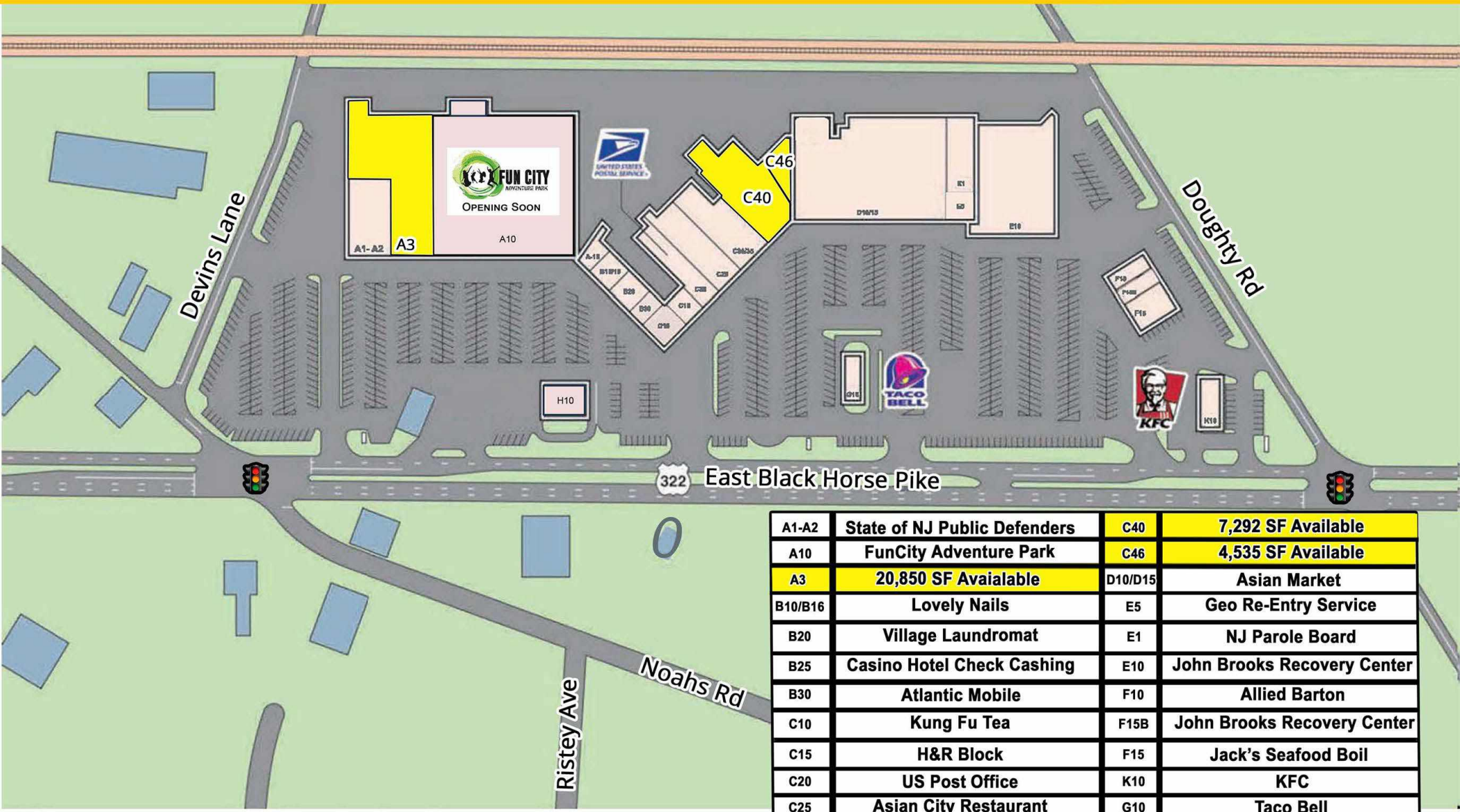


R.J. Brunelli & Co., LLC  
400 Perrine Rd, Ste 405  
Old Bridge, NJ 08857

732-721-5800  
www.rjbrunelli.com

Pleasantville Shopping Center  
 700 E Black Horse Pike  
 Pleasantville, NJ

Available for Lease:  
 20,850 SF; 7,292 SF; &  
 4,535 SF



A1-A2	State of NJ Public Defenders	C40	7,292 SF Available
A10	FunCity Adventure Park	C46	4,535 SF Available
A3	20,850 SF Available	D10/D15	Asian Market
B10/B16	Lovely Nails	E5	Geo Re-Entry Service
B20	Village Laundromat	E1	NJ Parole Board
B25	Casino Hotel Check Cashing	E10	John Brooks Recovery Center
B30	Atlantic Mobile	F10	Allied Barton
C10	Kung Fu Tea	F15B	John Brooks Recovery Center
C15	H&R Block	F15	Jack's Seafood Boil
C20	US Post Office	K10	KFC
C25	Asian City Restaurant	G10	Taco Bell
C20/C35	Rainbow	H10	7 Sister Vietnamese Cuisine

**Mario Brunelli** / VP of Investment Sales & Site Acquisitions  
 Cell: 786-570-9723  
 mbrunelli@rjbrunelli.com

**Chelsea Reizner** / Sales Associate  
 Cell: 201-724-4931  
 creizner@rjbrunelli.com



R.J. Brunelli & Co., LLC  
 400 Perrine Rd, Ste 405  
 Old Bridge, NJ 08857

732-721-5800  
 www.rjbrunelli.com

Pleasantville Shopping Center  
700 E Black Horse Pike  
Pleasantville, NJ

Available for Lease:  
20,850 SF; 7,292 SF; &  
4,535 SF



**Mario Brunelli** / VP of Investment Sales & Site Acquisitions  
Cell: 786-570-9723  
mbrunelli@rjbrunelli.com

**Chelsea Reizner** / Sales Associate  
Cell: 201-724-4931  
creizner@rjbrunelli.com

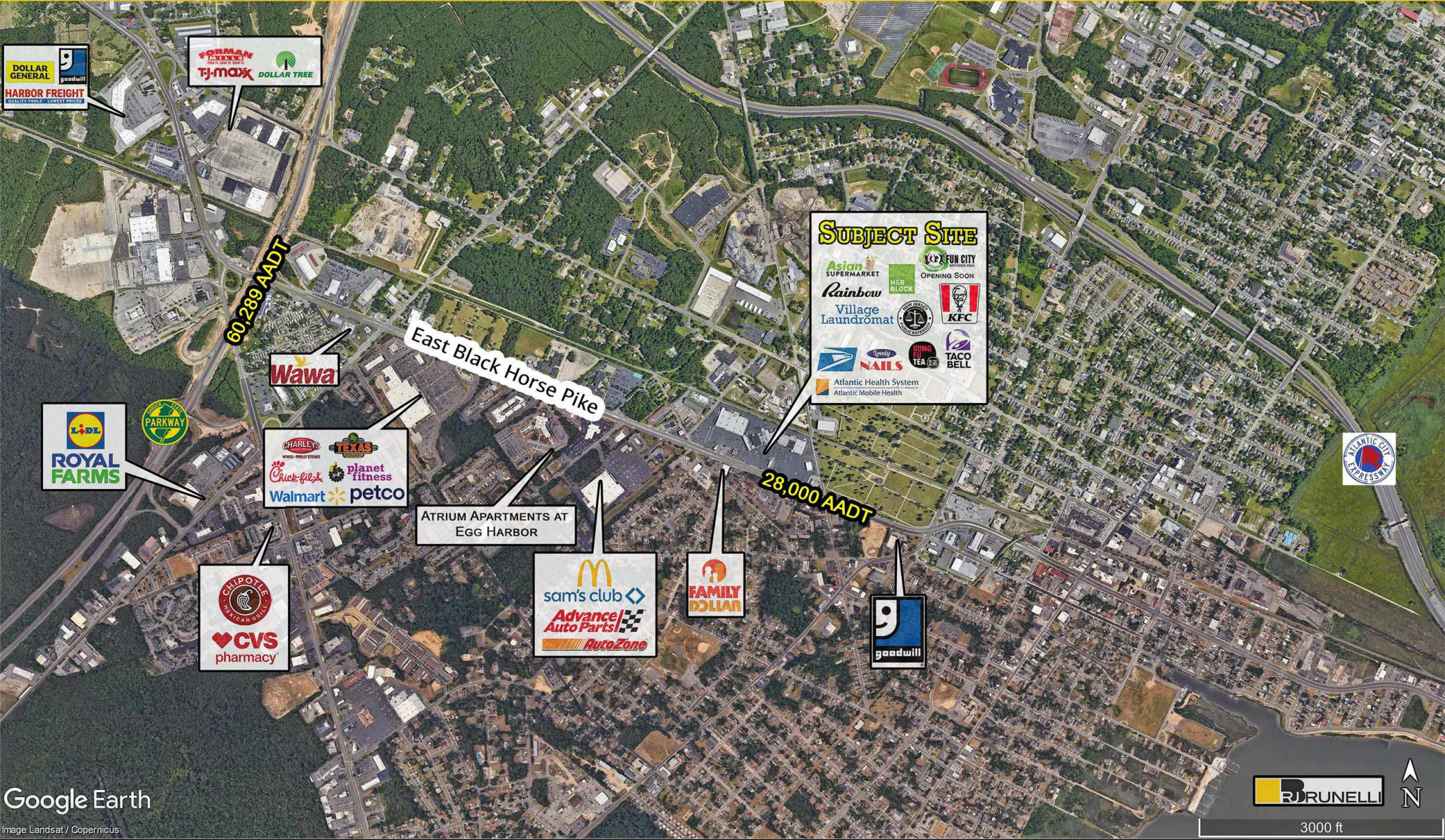


R.J. Brunelli & Co., LLC  
400 Perrine Rd, Ste 405  
Old Bridge, NJ 08857

732-721-5800  
www.rjbrunelli.com

Pleasantville Shopping Center  
 700 E Black Horse Pike  
 Pleasantville, NJ

Available for Lease:  
 20,850 SF; 7,292 SF; &  
 4,535 SF



Google Earth

Image Landsat / Copernicus



3000 ft

**Mario Brunelli** / VP of Investment Sales & Site Acquisitions  
 Cell: 786-570-9723  
 mbrunelli@rjbrunelli.com

**Chelsea Reizner** / Sales Associate  
 Cell: 201-724-4931  
 creizner@rjbrunelli.com

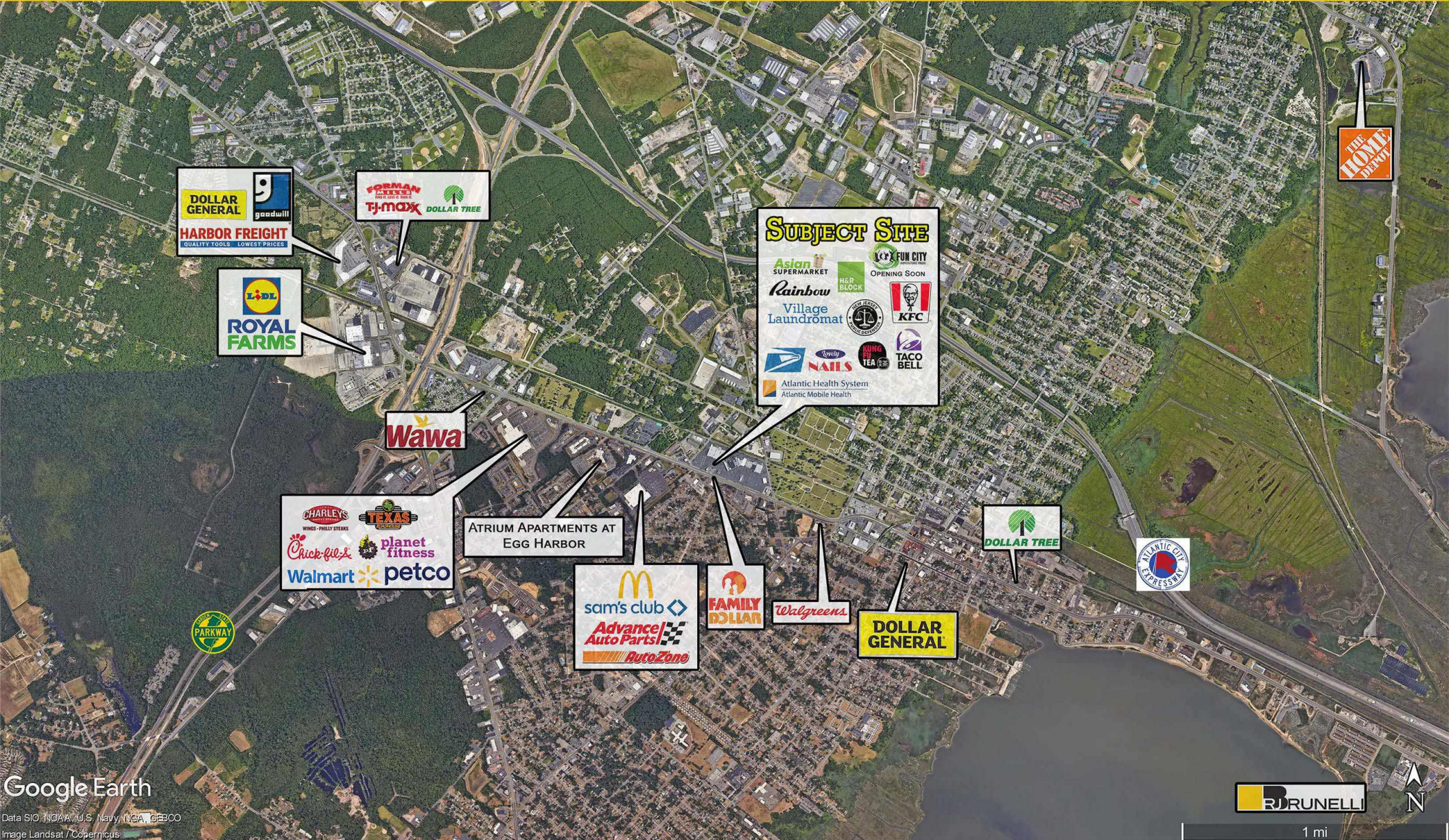


R.J. Brunelli & Co., LLC  
 400 Perrine Rd, Ste 405  
 Old Bridge, NJ 08857

732-721-5800  
 www.rjbrunelli.com

Pleasantville Shopping Center  
 700 E Black Horse Pike  
 Pleasantville, NJ

Available for Lease:  
 20,850 SF; 7,292 SF; &  
 4,535 SF



Google Earth

Data SIO, NOAA, U.S. Navy, NGA, GEBCO  
 Image Landsat/Copernicus

**Mario Brunelli** / VP of Investment Sales & Site Acquisitions  
 Cell: 786-570-9723  
 mbrunelli@rjbrunelli.com

**Chelsea Reizner** / Sales Associate  
 Cell: 201-724-4931  
 creizner@rjbrunelli.com



R.J. Brunelli & Co., LLC  
 400 Perrine Rd, Ste 405  
 Old Bridge, NJ 08857

732-721-5800  
 www.rjbrunelli.com