



AVAILABLE:
1,500 SF; 1,800 SF; 2,325 SF; 2,800 SF; 3,217 SF; 4,400 SF;
5,267 SF; & 23,700 SF

Join Home Depot, Bingo Wholesale, Wine Academy Superstore, Value City Furniture, Krispy Kreme and others!

Home Depot received 1,000,000 visits in 12 months, and is ranked in the top 30% for the number of visits for Home Depot stores in NJ! *

The subject site is located at the signalized intersection of Route 70 and Shorrock St.

Easy access to and from The Garden State Parkway Exit 89 and access points on Rt 70 and Shorrock St. with a combined Traffic Count of 74,000 cars per day.

NNN estimated Taxes, CAM, and Insurance totaling approx. \$5.40/SF (\$2.56/SF CAM and Taxes \$2.84/SF)

Seeking fast casual restaurant including burgers, sushi, eye doctor, pharmacy, hobby/game store, wireless store, office furniture and supplies, beauty supplies, med spa, and pet store.

*Per Placer a.i.

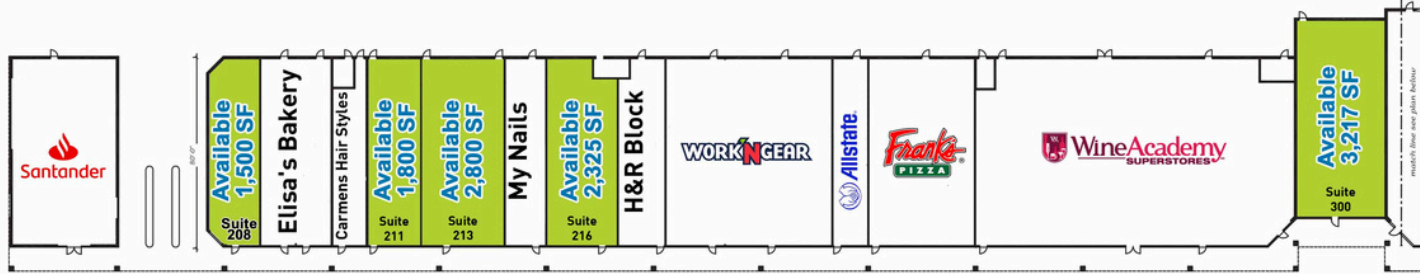
Demographics	1 Mile	3 Miles	5 Miles
Population:	5,123	85,561	266,141
HH Income:	\$100,914	\$107,196	\$119,634
Daytime Pop	7,312	92,389	243,135

Total GLA

315,000 SF

Traffic Counts

Garden State Parkway	107,540 Cars Per Day
Route 70	52,554 Cars Per Day
Shorrock St.	21,410 Cars Per Day



Suite 508	5,267 SF Approx. (52' x 100') Available
Suite 301	4,400 SF Approx. (32' x 44') Available
Suite 300	3,217 SF Approx. (35' x 92') Available
Suite 216	2,325 SF Approx. (30' x 80') Available
Suite 213	2,800 SF Approx. (33' x 78') Available
Suite 211	1,800 SF Approx. (22' x 80') Available
Suite 210	23,700 SF Approx. (135' x 182') Available
Suite 208	1,500 SF Approx. Available



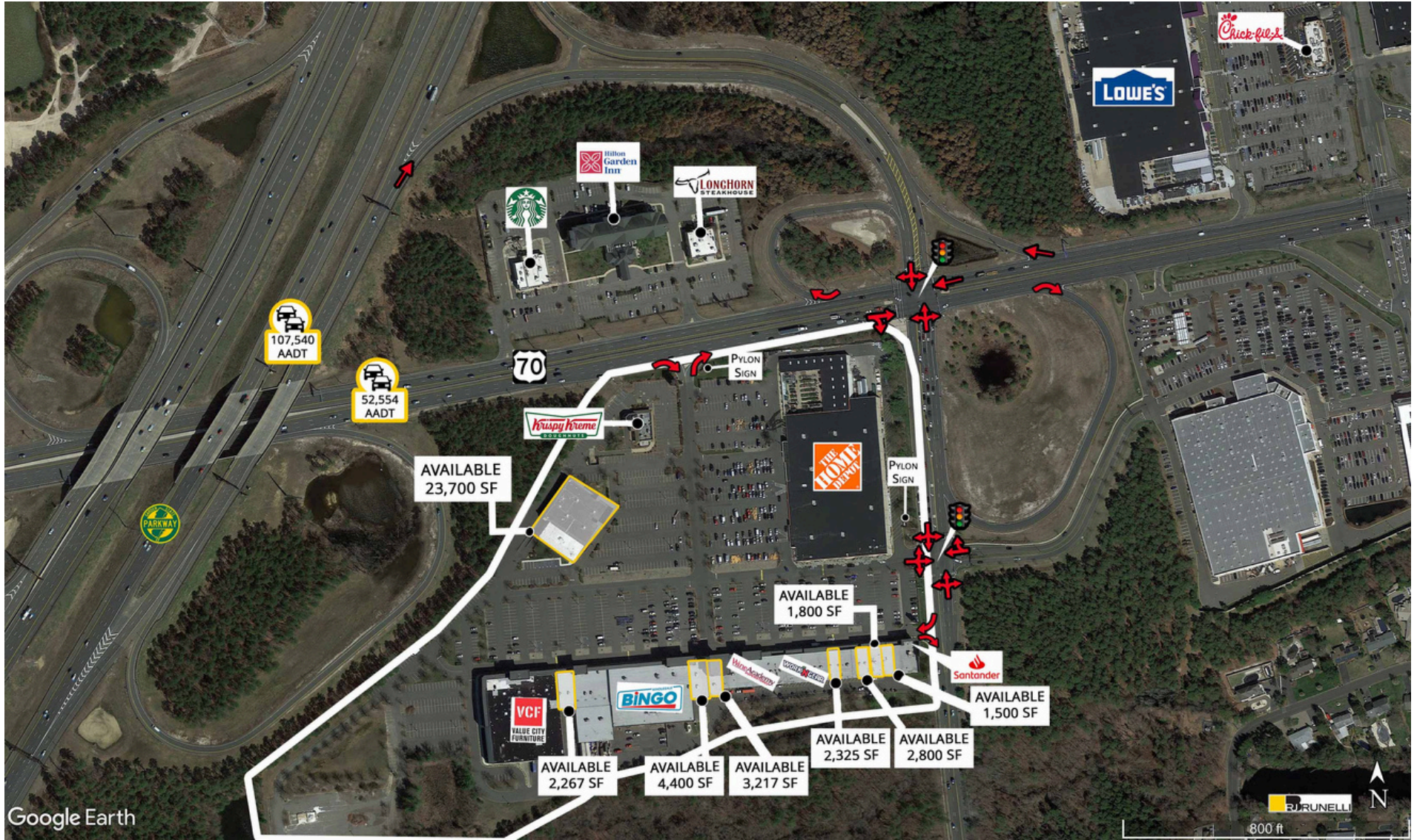


Suite #508 is 5,267 SF and is located between Bingo Wholesale and Value City Furniture. This space features prominent facade signage!

The above photo features Suites #301 and Suite #300. These Suites can be combined to total 7,617 SF and have tremendous exposure and direct visibility to traffic entering the center from Route 70.

Suite #210





Google Earth

1900 Route 70
AVAILABLE FOR LEASE

CONNECT WITH US TODAY



DANIELLE BRUNELLI
dbrunelli@rjbrunelli.com
732-721-5800, ext. 29



RON DELUCA
rdeluca@rjbrunelli.com
732-721-5800, ext. 28



NISSI WASSERMAN
nwasserman@rjbrunelli.com
732-503-0717



R.J. Brunelli & Co., LLC,
400 Perrine Rd, Ste 405 Old Bridge, NJ 08857
732-721-5800 www.rjbrunelli.com

All information is from sources believed reliable and has not been independently verified. No representation is made to the accuracy of information herein, which is subject to errors, omissions and modifications. Licensed in NY, NJ, & PA.

12-02-2024