

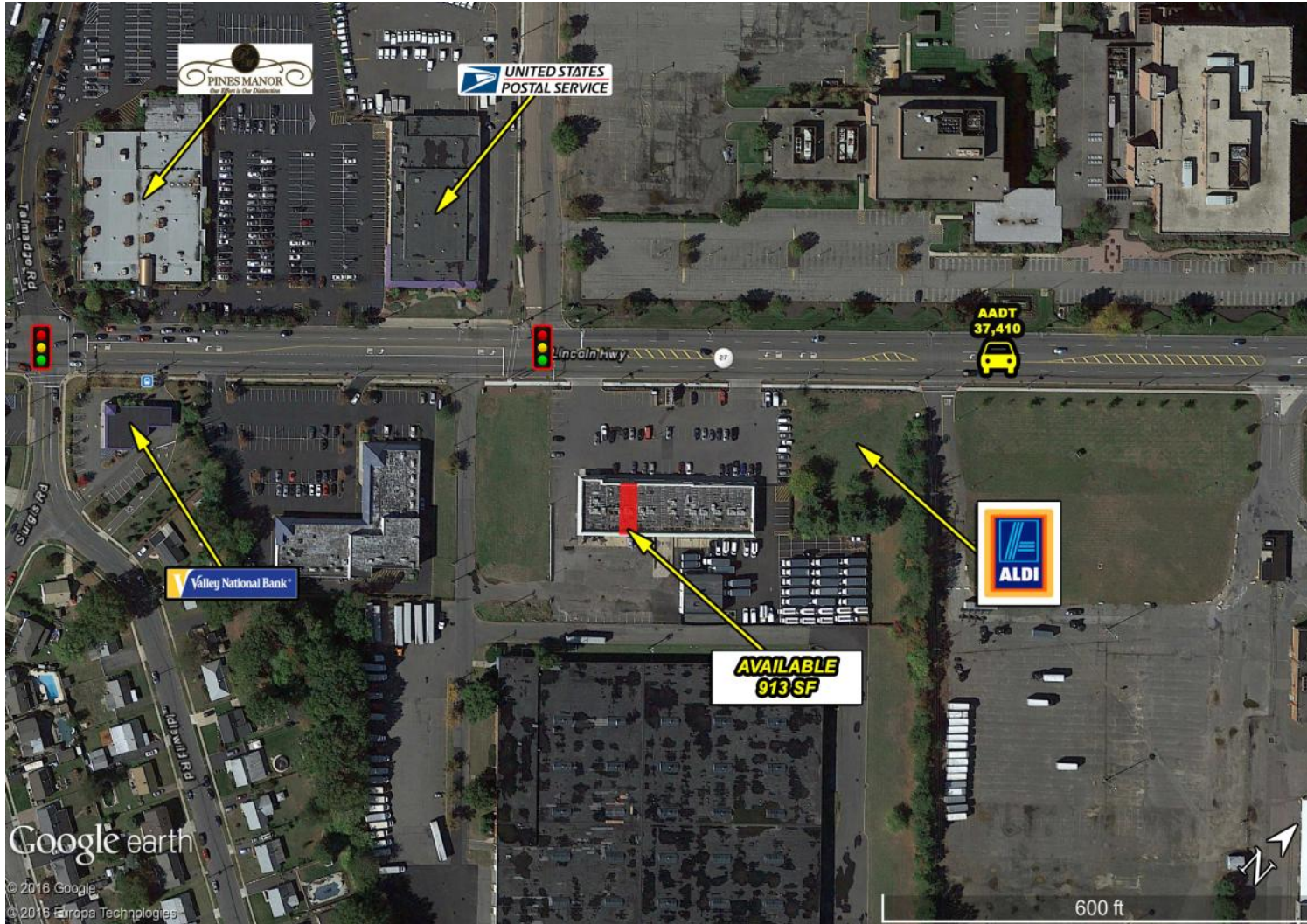
2120 ROUTE 27, EDISON, NJ
913+/- SF AVAILABLE



JOIN



EDISON COMMONS
2120 ROUTE 27
EDISON, NEW JERSEY



PROPERTY HIGHLIGHTS

- Aldi Market now open
- Join 7Eleven, Entenmann's, Enterprise Car Rental, Verizon, Geico, and Go Go Uniforms
- High visibility frontage and ample sign band & pylon space
- Full access adjacent to a traffic control signal
- Route 27 average annual daily traffic count of 37,410 vehicles



R.J. Brunelli & Co. LLC, Exclusive Listing Agent

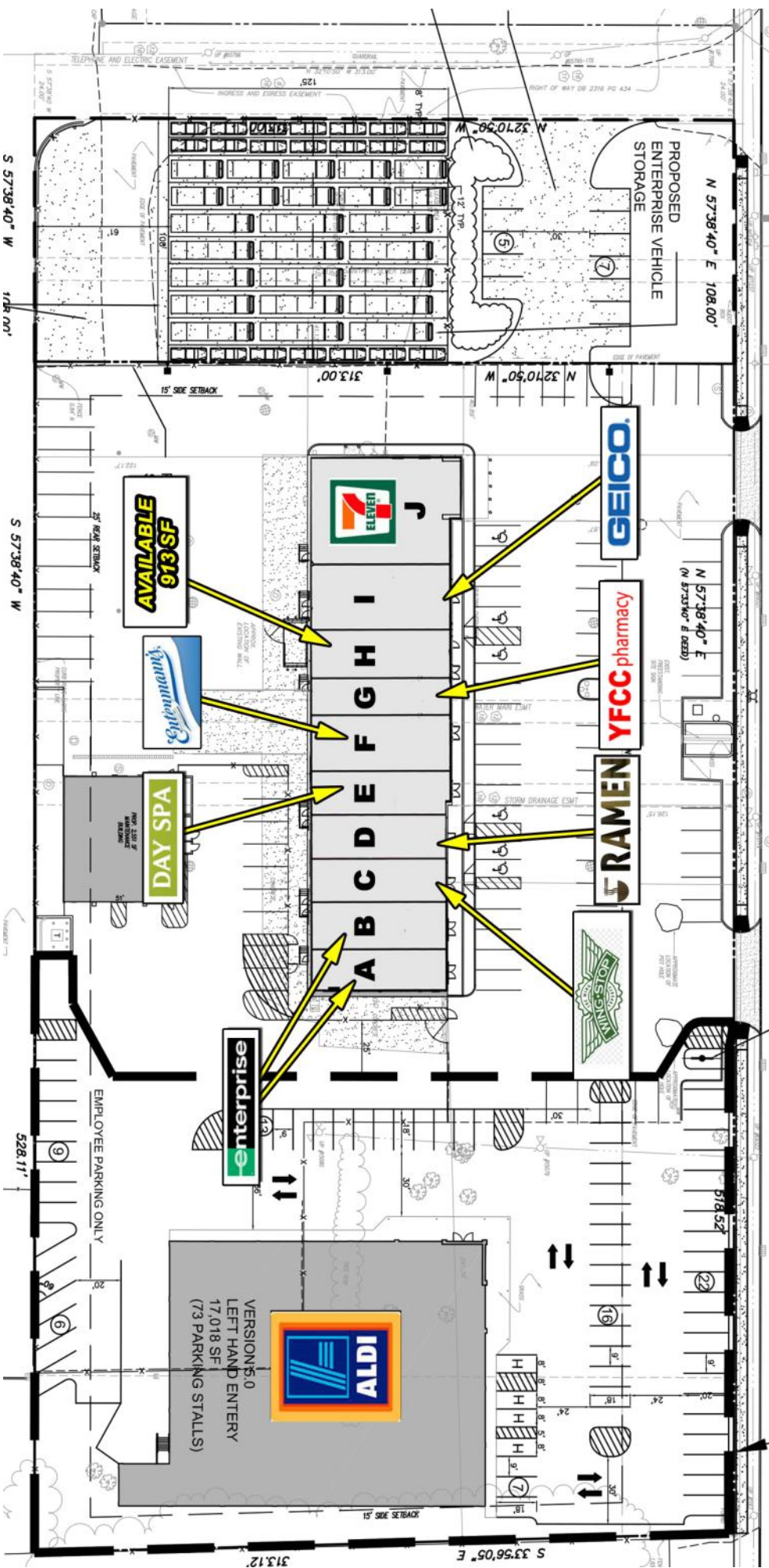
Available - 913+/- SF
 Parking - 114 spaces
 Traffic Count - Route 27 = 37,410 cars per day

2018 DEMOGRAPHICS		
Criteria	Population	Avg HH Income
Miles: 1	9,249	\$113,040
Miles: 3	104,384	\$121,312
Miles: 5	300,389	\$109,235
Criteria	Daytime Population	
Miles: 5	180,051	

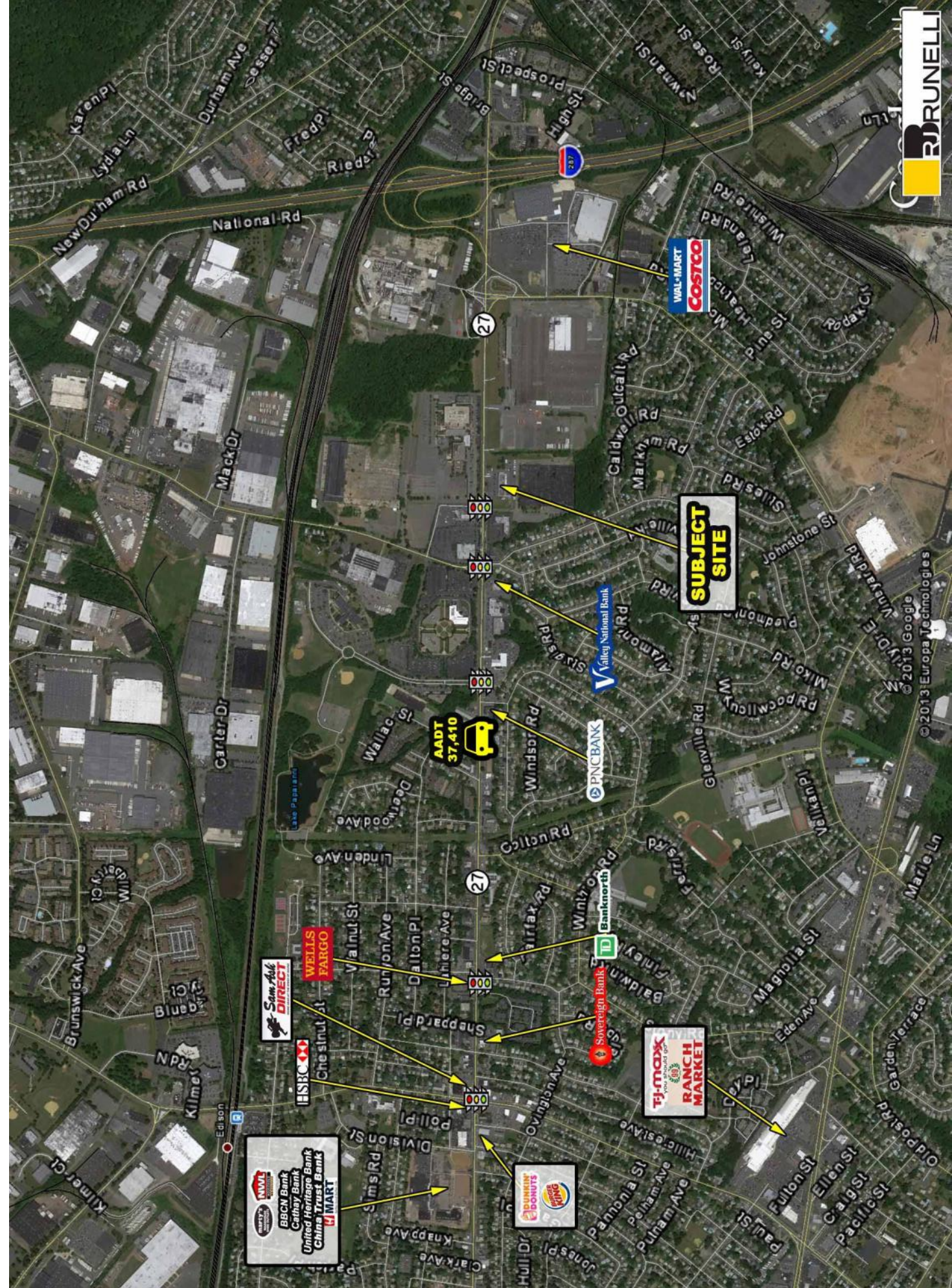
For more information please contact:

EXCLUSIVE BROKER

John. Lenaz
 Senior Sales Associate
 RJ Brunelli & Co., LLC
 400 Perrine Road, Suite 405
 Old Bridge, NJ 08857
 Phone: 732-721-5800, ext. 26
 Email: jlenaz@rjbrunelli.com
 Visit our website: www.rjbrunelli.com



Space	Tenant	Area	Dimensions	STATUS
A	Enterprise	1,151 SF	15'2" x 62'9"	OPENED
B	Enterprise	1,234 SF	16'4" x 62'9"	SIGNED LEASE
C	Wing Stop	1,234 SF	16'4" x 62'9"	SIGNED LOI
D	Ramen Noodles	1,234 SF	16'4" x 62'9"	AVAILABLE
E	Day Spa	1,261 SF	21' x 60'	
F	Entenmann's	2,347 SF	24' x 60'	
G	Pharmacy	900 SF	15' x 60'	
H	AVAILABLE	913 SF	29' x 60'	
I	Geico	1,820 SF	30' x 60'	
J	711	3,271 SF	54' x 60'	



The information provided above is for general information purposes only, and is subject to change by the broker and the landlord from time to time. Nothing contained above is intended to be a binding representation. The broker and the landlord make no warranty in the above information as to the accuracy, character, occupancy or configuration of the property represented.
 UPDATED: 03/08/19 P:/Flyers Active/Edison - 2120 Route 27

